

UniCel DxC 600/800 Monthly Maintenance

Page	Action
3	Replace Alkaline Buffer Reagent and In-Line Filter
5	Perform Clean Chloride Electrode Tip and Flow Cell Port
6	Perform Clean All Cup Modules procedure
7	Perform BUNm/UREAm Electrode Maintenance (DxC 800 Only)
8	Perform the Calibrate Lamps & Sensor procedure
9	Perform the Clean Mixers procedure
10	Initial and Date Electronic Maintenance Log

For Training Purposes Only

These job aids are shortened versions of procedures found in the references below. Information in the job aid is correct as of the date published. Verify you have the correct information.

References:

- UniCel® DxC Synchron Systems Instructions for Use PN A93719AC (March 2014)

UniCel DxC 600/800 Synchron Clinical Systems

WARNINGS AND PRECAUTIONS

Read all product manuals and consult with Beckman Coulter-trained personnel before attempting to operate the instrument.

Beckman Coulter, Inc. urges its customers and employees to comply with all national health and safety standards such as the use of barrier protection. This may include, but is not limited to, protective eyewear, gloves, suitable laboratory attire when operating or maintaining this or any other automated laboratory equipment.

INTENTION FOR USE

This document is not intended to replace the information in your Instrument Instructions for Use Manual (IFU). Information in the Instructions for Use Manual supersedes information in any other manual.

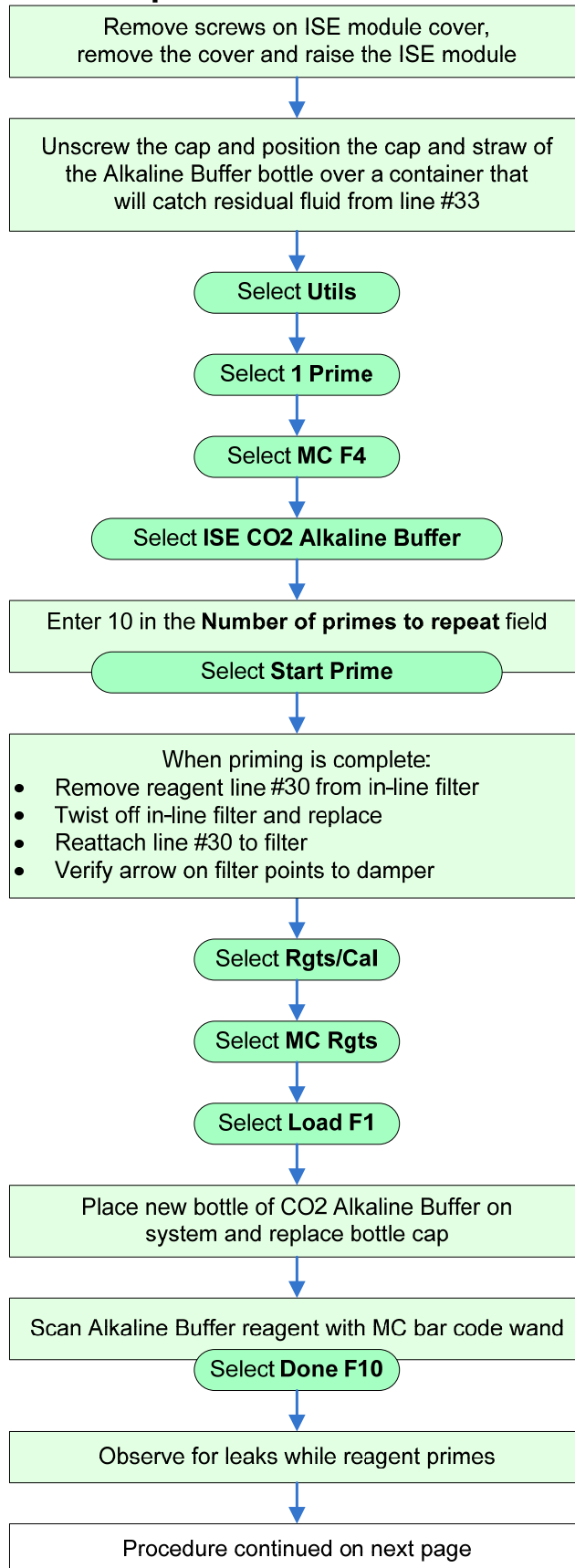
REVISION STATUS

Rev. E (September 2014)
Based on DxC software version 5.4

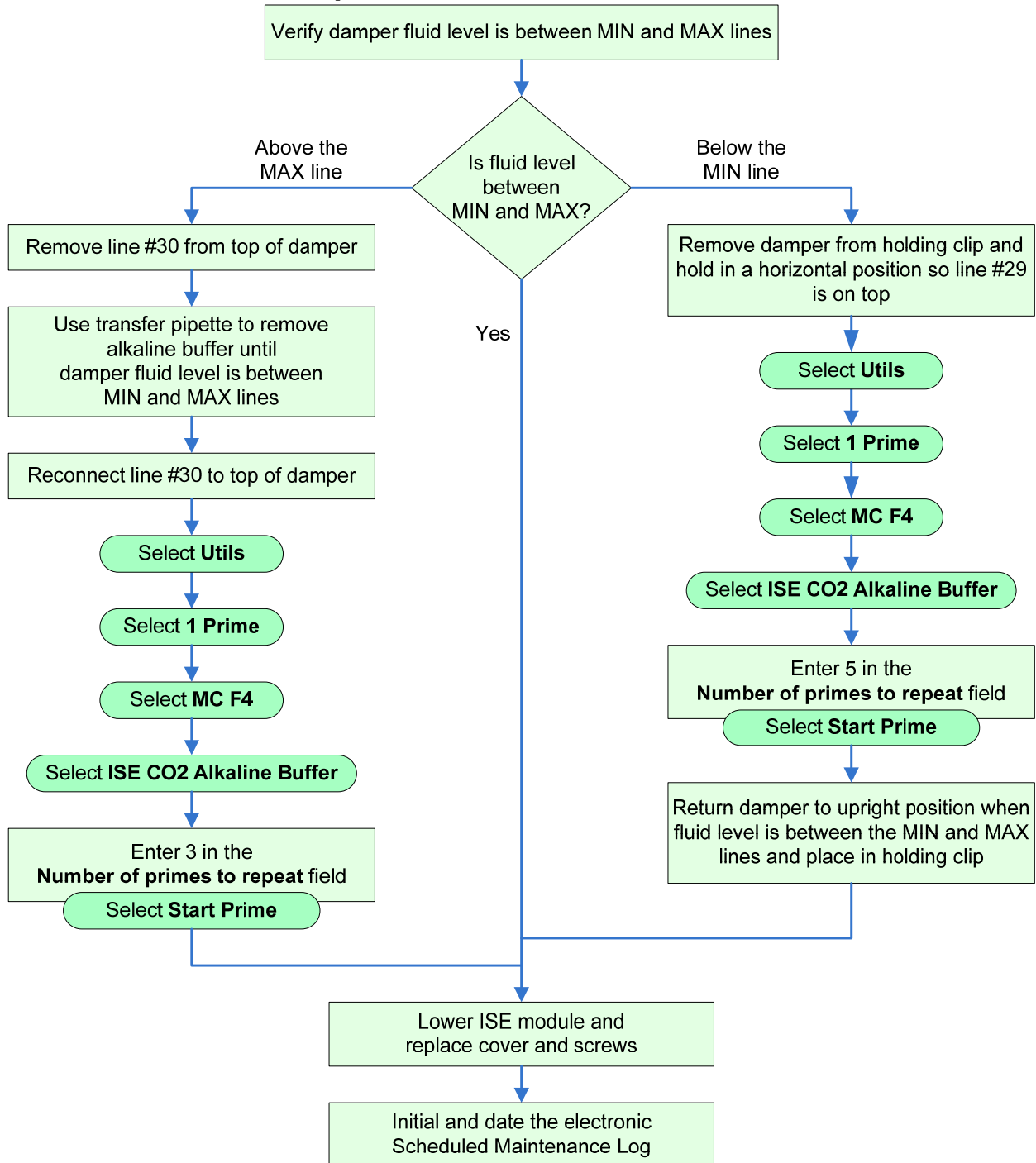
TRADEMARKS

Beckman Coulter, the stylized logo, Access, Microtube, Synchron, and UniCel are trademarks of Beckman Coulter, Inc., and are registered with the USPTO. All other trademarks are the property of their respective owners.

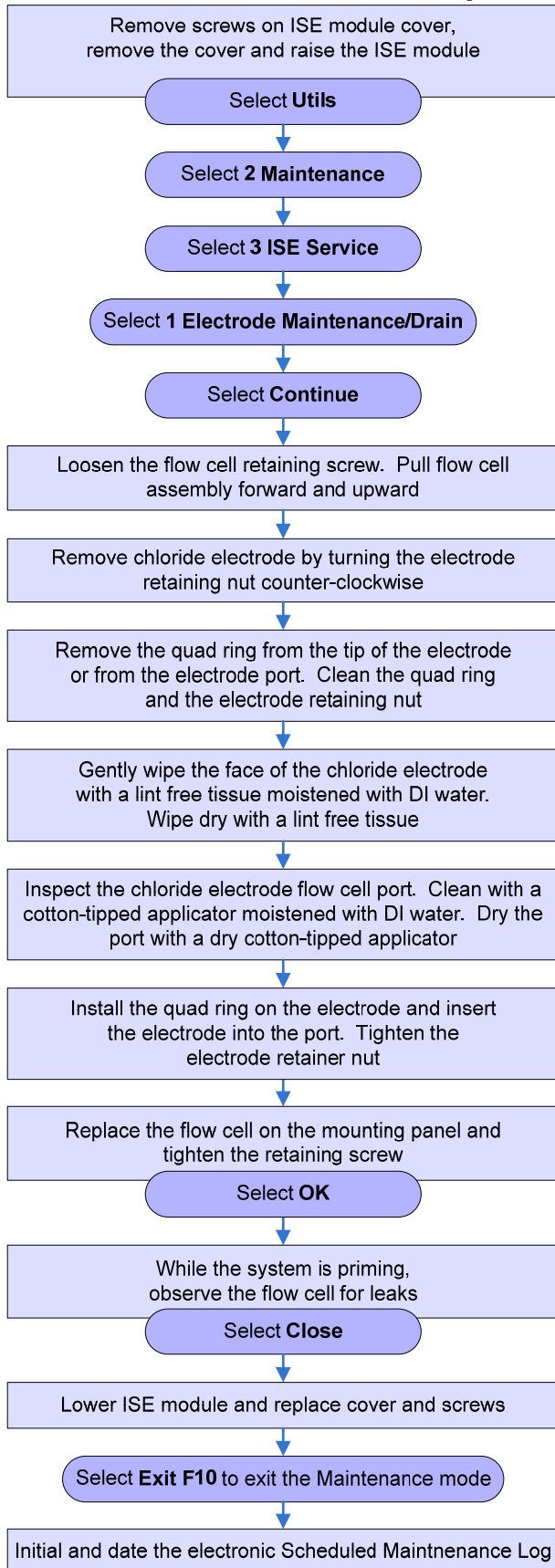
Replace Alkaline Buffer



Replace Alkaline Buffer, cont'd

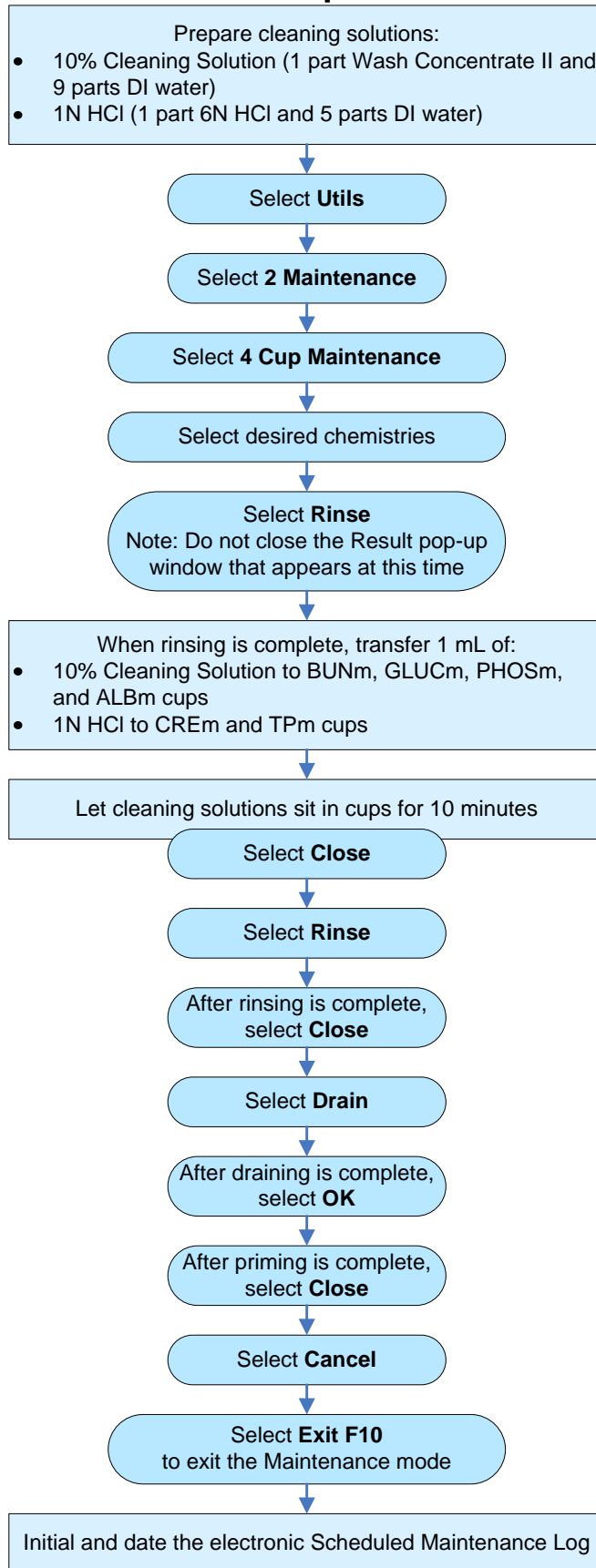


Clean Chloride Electrode Tip and Flow Cell Port

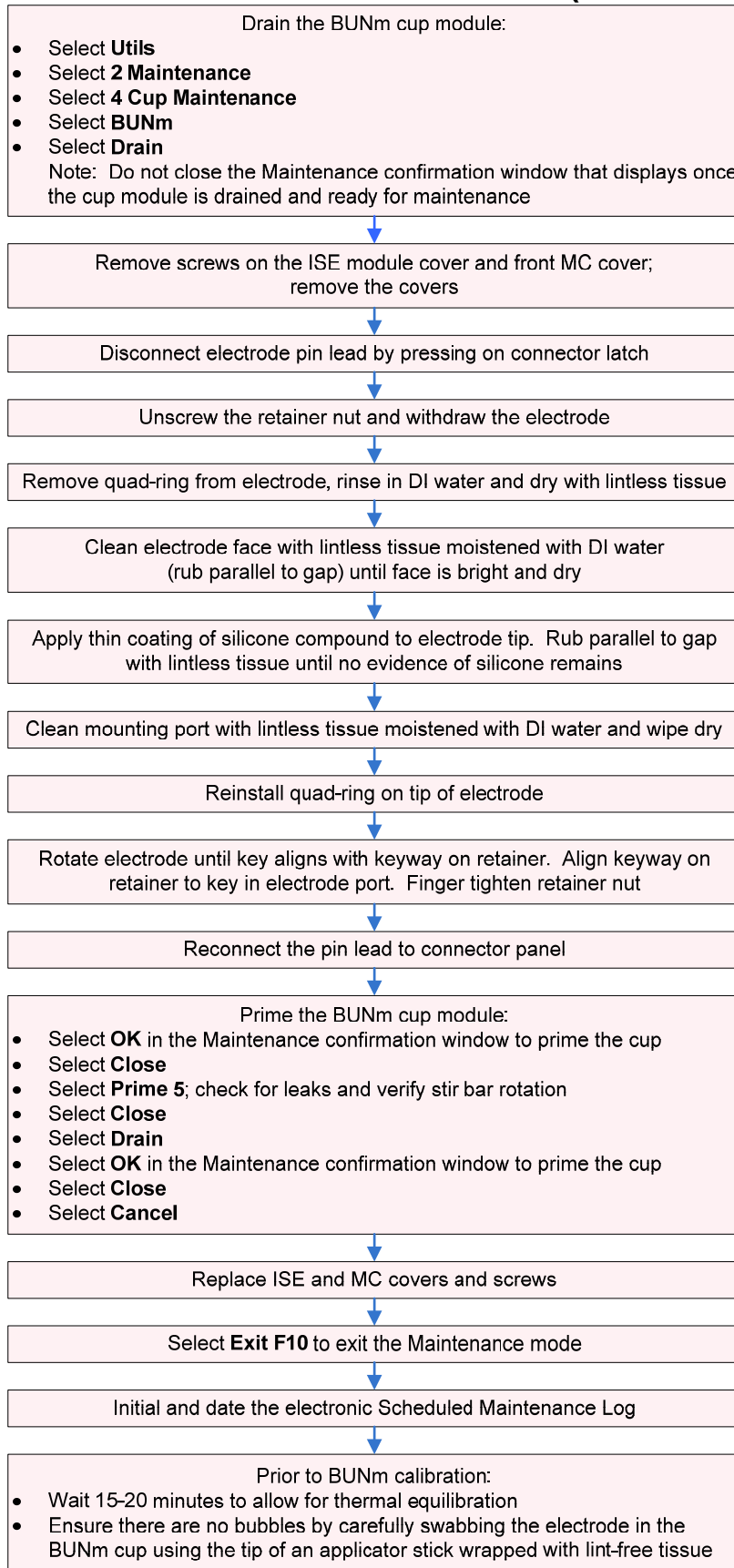


CAUTION:
Wear the ESD wrist ground strap when performing this procedure.

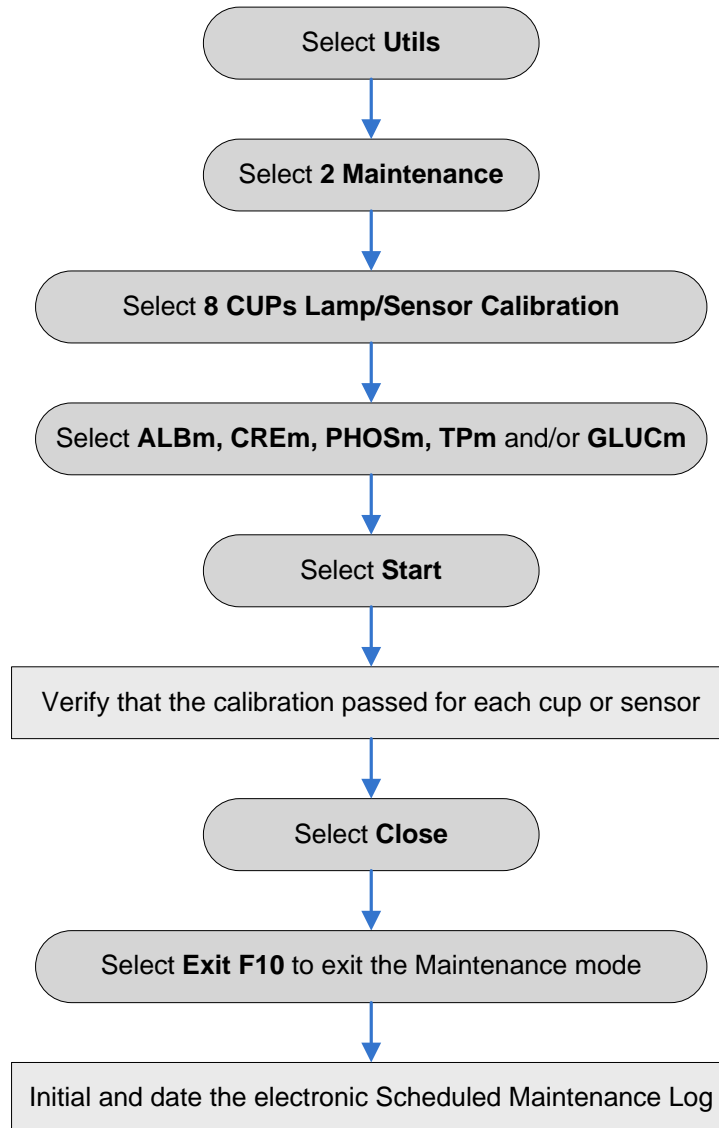
Clean All Cup Modules



BUNm/UREAm Electrode Maintenance (DxC 800 Only)



Calibrate Lamps & Sensor



Clean Mixers

CAUTION: Wear the ESD wrist ground strap when performing this procedure.

Wipe the outside of both mixers with an alcohol pad saturated with 70% isopropyl alcohol

Inspect mixers for scratches or nicks.
Replace, if necessary

Initial and date the electronic Scheduled Maintenance Log

Initial and Date Electronic Maintenance Log

